



FS 522 FORMING SYSTEM

2-lane process for products in 3D shapes into water or oil bath systems, or onto a conveyor belt with the flattening option

- **WIDE RANGE OF SHAPES** due to rotating hole plate system, extended further thanks to flattening belt or structuring roller
- **HIGH DEGREE OF FLEXIBILITY** due to two application options: via systems, e.g. water or oil bath systems, or onto a conveyor belt with the flattening option
- **MAXIMUM WEIGHT ACCURACY** per lane and product due to servo-driven flow divider
- **HIGH PRODUCTION OUTPUT** with up to 250 cycles per minute
- **HIGH ECONOMIC EFFICIENCY** due to less raw material give-away
- **FIRST-CLASS PRODUCT QUALITY** due to gentle process
- **EXCELLENT HANDLING** due to operator-friendly ergonomics
- **COST SAVINGS** due to low maintenance costs and easy cleaning

FS 522 for medium-scale and industrial producers

Forming with a hole plate system, optionally directly into water or oil bath systems, onto laminating systems and subsequent conveyor belts

The FS 522 forming system is designed for the 2-lane production of formed products such as balls, sticks or burgers. Fields of application are meat, convenience, dairy/cheese, fish, vegetable/vegetarian products, etc.

PRODUCT EXAMPLES formed products

Minced meat balls, potato products, dumplings, cevapcici, soup add-ins, gnocchi, oriental balls, etc.

PRODUCT EXAMPLES flattened products

“Homemade” burgers, fish burgers and rissoles, vegetable burgers, rissoles, mini rissoles, falafel, etc.

The process

The filling product is fed to the flow divider by a vacuum filler. The active servo-driven flow divider ensures precise rotor speed in the flow divider. The result is a continuous product flow without pressure fluctuations, and thus extremely accurate final weights. The flow divider ejects the filling product in multi-lane filling flows via mould components. The product shape can be shown on the screen and the process parameters can be calculated via the vacuum filler control system. The rotating hole plate system forms the products into the required 3D shape. The shape can be changed by simply switching a few mould components.

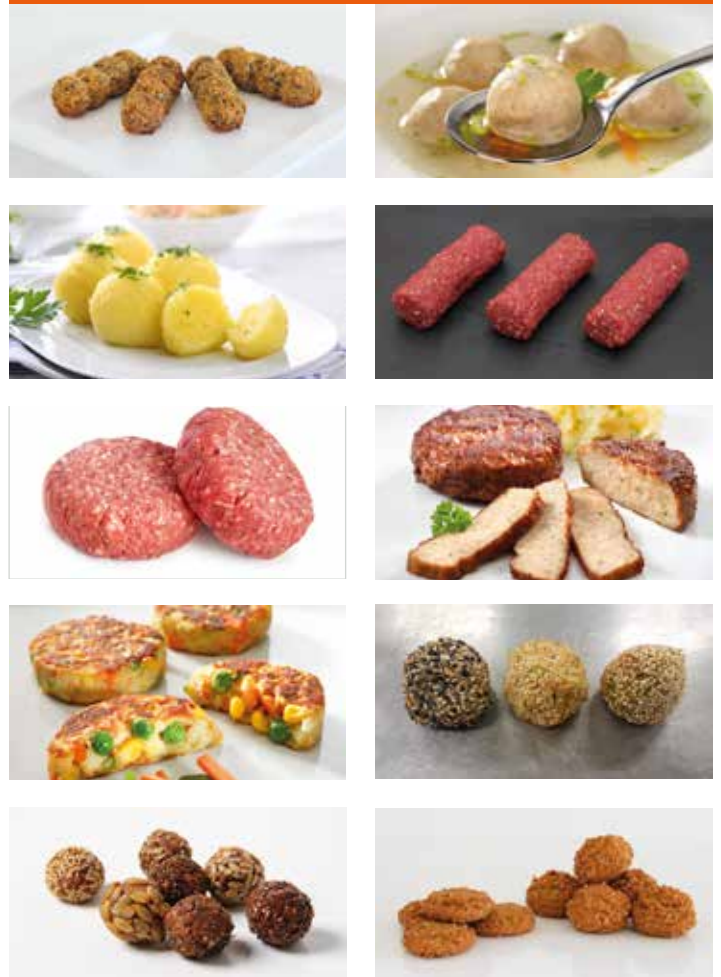
PERFORMANCE PARAMETERS

- FST 546 flow divider with servo drive, 2 lanes
- Forming module outlet spacing 100 mm
- Rotating hole plate system
- Product diameter up to 100 mm (correspondingly larger when flattened)
- TB 446 conveyor belt: Width 300 mm
Height: 850 to 1,000 mm
- Flattening option for burgers: flattening height 10 to 55 mm
- It is imperative that safety is adapted on a customer-specific basis

OPTIONS

- Structuring rollers for different product surfaces
- Inline grinding system in the VF for even further improvement of the product quality
- HDS digital options in the VF, such as HCU software for central production control, provide added value

PRODUCTS



APPLICATIONS

