

Vacuum valves are used in the food or drink, pharmaceutical and chemical industries. They are used for protection against a negative pressure in tanks and other enclosed systems.

Valve types 12504 and 12818 are characterized by:

- weight-loaded vacuum valve
- with welding flange or direct installation in the manhole cover
- easy-to-service two-part valve housing
- valve housing with guided valve disc
- wide range of sizes for hot or cold cleaning
- optionally available with a pneumatic lifting
- optionally available with heating cartridges
- optionally available with a proximity switch
- optionally available with a splash guard hood



Product range

Materials	stainless steel 1.4404
Gaskets	EPDM, FDA proof
Surface	0.8 - 1.2 µm

Other parts

Materials	stainless steel 1.4307
Surface	precision turned

Production

Fluids (nontoxic)	Fluids/gases/steam (Group II, PED 2014/68/EU)
Set pressure	Vacuum 3 – 4 mbar
Counter pressure	depressurized tank, max. 0.2 bar
Control air	5 - 8 bar, Ø 6/4
Stroke	3 - 4 mm
Temperature	0 - 95 °C, temporary 140 °C

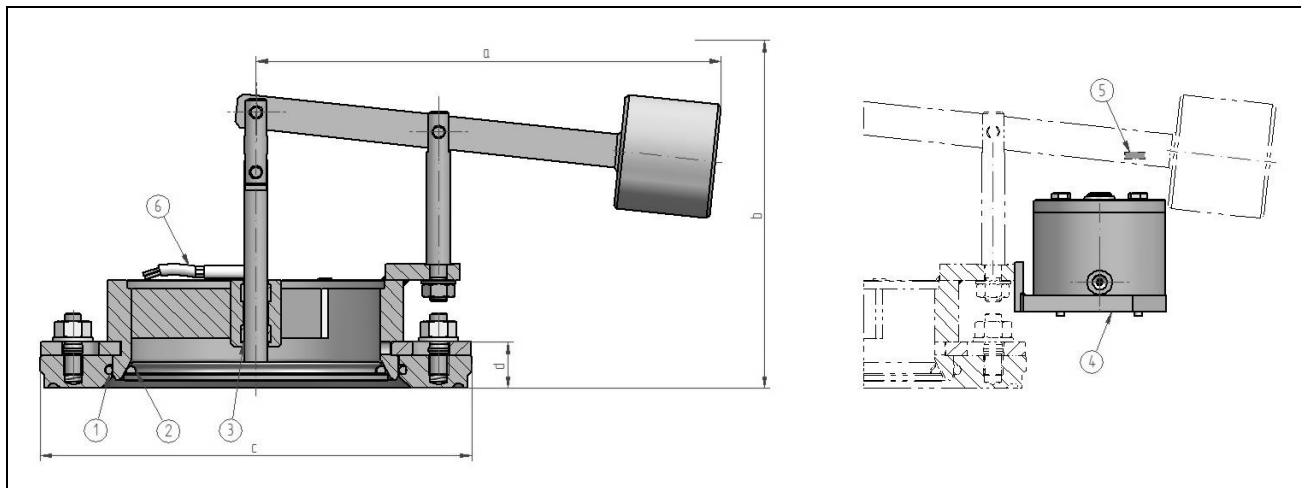
Vacuum valve (weight loaded)

12504, 12818

Pneumatic lifting device:

- Lifting of the vacuum valve during tank CIP, „cold“ (depressurized tank)
- Stroke of the lifting cylinder pre-adjusted ex works
- Pressurized air supply, air hose
- Proximity switch

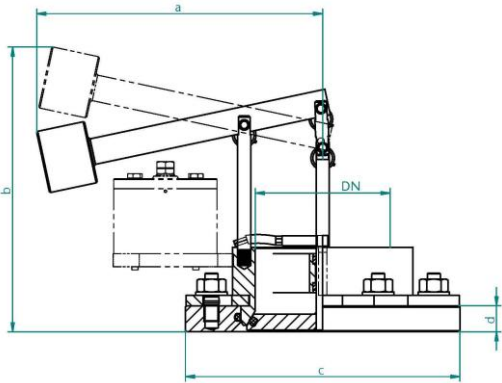
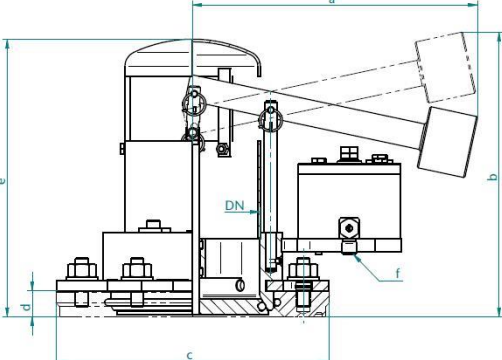
Valve types and dimensions



1	Flange O-ring	2	Guide band	3	Position indicator
4	Seat O-ring	5	Lifting cylinder	6	Heating cartridge

Vacuum valve (weight loaded)

12504, 12818

12504	DN	a [mm]	b [mm]	c [mm]	d [mm]
	100	218	220	210	20
	150	280	225	260	20
	200	370	270	310	20
	300	445	295	430	20
	400	540	340	540	23
12818 (VV 12504 with splash guard)	DN	a [mm]	b [mm]	c [mm]	d [mm]
	100	220	220	210	20
	150	280	265	260	20
	200	370	280	310	20
	300	445	297	430	20
	400	540	344	540	23