

Vacuum filling machines VF 50 and VF 80



*Versatile machines
for small-scale producers*

handtmann
Ideas for the future.



*Taking the lead thanks
to flexibility*

Maximum versatility thanks to a sophisticated product concept

Vacuum filling machines, developed specifically for small-scale producers

The Handtmann VF 50 and VF 80 vacuum filling machine line was developed specifically to meet the diverse requirements of small-scale producers.

The wealth of experience gained over decades in production of automatic filling and portioning machines provides very many profitable advantages for users:

- ◆ Rational sausage production
- ◆ Gentle handling
- ◆ Maximum versatility
- ◆ Fast conversion
- ◆ High level of hygiene and safety
- ◆ Reliability and maximum availability
- ◆ Low maintenance and servicing costs

To small-scale producers in particular, new innovative sausage products are crucial to market success in the long term.

This is why Handtmann, with its numerous accessories, provides you with the option of achieving major product diversity and rational, fast conversion at one and the same time.

Trust in time-proven sausage products and new, innovative ideas: with the Handtmann VF 50, VF 80 and VF 80/160 vacuum filling machines.



Photo: Handtmann VF 50



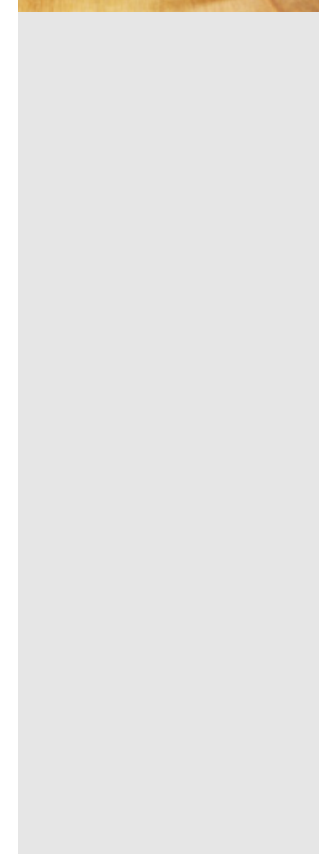


Photo: Handtmann VF 80

Photo: Handtmann VF 80/160



Quality through precision

Gentle handling with the Handtmann vane cell feed system

Excellent feed performance boosts your output

A high feed performance and, at one and the same time, gentle handling of all products are important factors for success as far as profitability of small-scale producers goes.

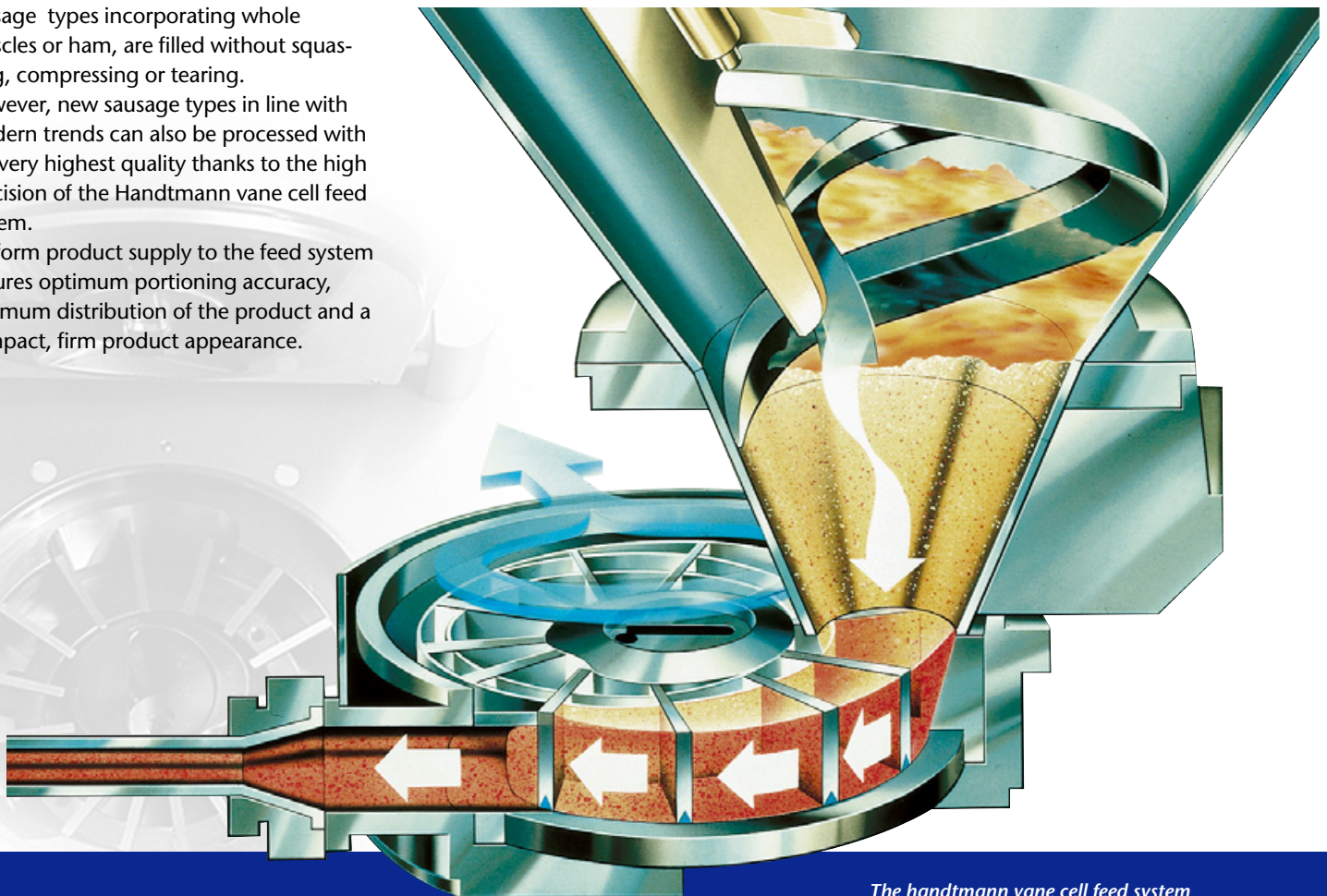
This is precisely the strength of the vane cell feed system of the Handtmann VF 50, VF 80 and VF 80/160 vacuum filling machines.

All products, from dry sausage through cooked sausage and liquid liver sausage to sausage types incorporating whole muscles or ham, are filled without squashing, compressing or tearing.

However, new sausage types in line with modern trends can also be processed with the very highest quality thanks to the high precision of the Handtmann vane cell feed system.

Uniform product supply to the feed system ensures optimum portioning accuracy, optimum distribution of the product and a compact, firm product appearance.

- ◆ Gentle handling of the product
- ◆ Fast change-over
- ◆ Optimum processing even of new products types
- ◆ Maximum portioning accuracy



The handtmann vane cell feed system

handtmann

Efficient and economical production thanks to precise control and high switching accuracy

Perfect technology optimises your production workflow

A lack of user-orientated technology restricts the success of small to medium-size businesses. Handtmann recognised this at an early point and provides the best vehicle for economic and efficient production with the control system of the VF 50 and VF 80. The VF 50 features a Microcomputer control with diagnostic function as standard, reducing expensive downtimes to a minimum. Eighty programs which can be saved and additional production data which can be retrieved offer maximum reliability and trouble-free workflow:

- ◆ Reliable diagnostic function
- ◆ Easy operation, clearly-presented
- ◆ Memory stores up to 80 programs

The VF 80 can be equipped optionally with the monitor control. This computer control system offers very precise control and flexible communication with upstream equipment of all types and allows comprehensive documentation of the production data.

Easy filling of small batches

The VF 80 vacuum filling machine is also available with a larger separable hopper with a capacity of 90/160 litres.

On both models, the separability allows easy loading even of small batches.



MicroComputer control, VF 50



Monitor control, VF 80

Fast cleaning and exemplary hygiene

One other advantage of the separable hopper is fast clearing up and thorough cleaning.

The time saved when converting and faster type change make the separable hopper an important factor for reducing the workload of any small-scale producer.



Success thanks to productivity

Broad product diversity thanks to practical accessories

New sausage products revitalise your business

Small-scale producers can positively influence their business trends in targeted fashion by introducing product diversity and new, innovative sausage products.

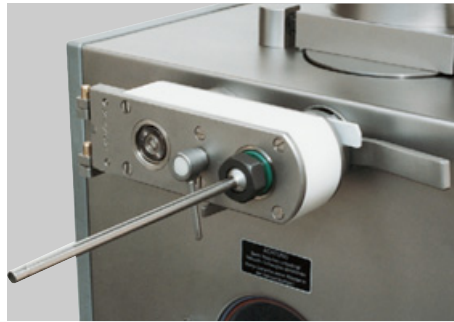
The diverse range of Handtmann accessories offers everything you need for this.

For instance, the casing spooler, Type 78-6, can greatly boost production capacity for sausages with any filling in natural casing.

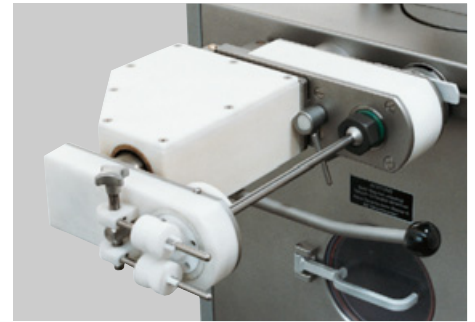
Fast conversion of upstream attachments is no problem for Handtmann. Quick-release catches allow all Handtmann attachments to be connected to the vacuum filling machine entirely without the need for tools.

Impress your customers with the convincing arguments of quality and product diversity: with Handtmann vacuum filling machines and a range of practically orientated accessories:

- ◆ Practical accessories increase diversity for the small-scale production
- ◆ Fast conversion saves costly time
- ◆ Additional equipment increases performance



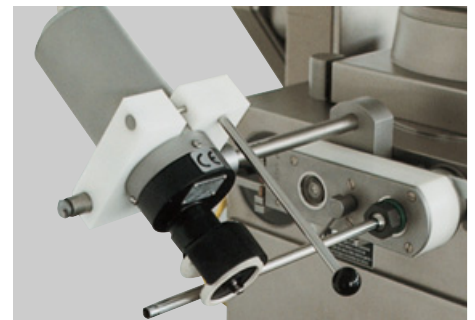
Linking gear-box, Type 34-5
Fast and simple connection above the worktable. With practical quick-release catch for secure attachment to the filling machine outlet.



Holding device, Type 60-6/7
Power-saving, effortless, single-handed operation to greatly simplify work. With precisely adjustable, flexible casing brake.



Holding device 60-8
One special feature is gentle linking of natural casing. This unit proves particularly useful for frequent product changes.



Casing spooler, Type 78-6
Ideal for boosting performance of sausage production in natural casing. Fast and gentle spooling onto the linking nozzle.





Filling head, Type 85-2

Simple and precisely portioned dosing of fluid to firm products: Non-drip, vertical admixing opens up new capabilities for product innovations.



Integrated accessory box

The accessory box with filling tubes and accessories is integrated in the front panel of the VF 50 and VF 80.



Curved can filling device

Ensures clean and effective filling and portioning in standard DIN cans.



Meatloaf filling head

Allows precise, neat and precisely portioned filling of the meatloaf baking trays.

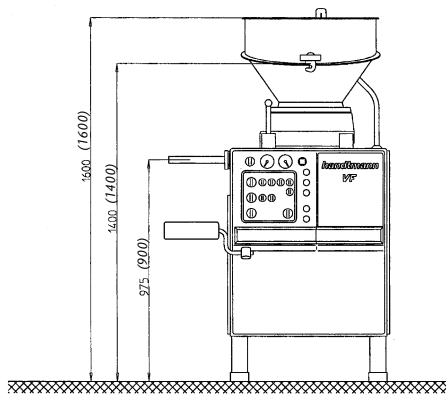


Technical data

	VF 50	VF 80	VF 80/160
Filling capacity (steplessly controllable)	2600 kg/h	3000 kg/h	3000 kg/h
Filling pressure	up to 55 bar	up to 35 bar	up to 35 bar
Portioning and linking speed with 2.5 links, dependent on product up to max.			
25g	420 portions/min.	420 portions/min.	420 portions/min.
50g	350 portions/min.	380 portions/min.	380 portions/min.
100g	250 portions/min.	280 portions/min.	280 portions/min.
200g	160 portions/min.	180 portions/min.	180 portions/min.
Linking speed 0.5–10, steplessly adjustable			
Portioning range	5–100,000 g	5–100,000 g	5–100,000 g
Filling hopper volume	80 Litres	80 Litres	160 Litres
in hopper lower section	40 Litres	40 Litres	90 Litres
Connected electrical rating with hydraulic arm lift	4 kW	4 kW	4 kW 4.5 kW
Net weight	450 kg	690 kg	1035 kg
Gross weight	660 kg	900 kg	1320 kg
Crate dimensions	1140x880x1870 mm		1460x1900x2250 mm

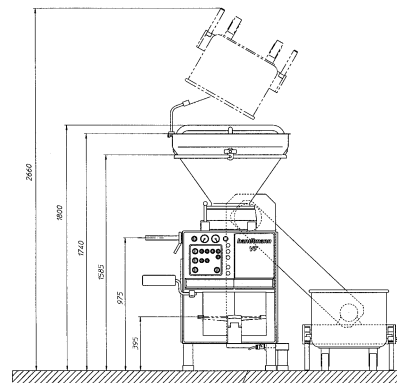
Normal accessories: 4 linking nozzles 12, 15, 19 and 22 mm Ø, 5 filling tubes 12, 16, 22, 30 and 40 mm Ø, hydraulic arm lift (VF 80 and VF 80/160), Operating Manual

Subject to technical modification

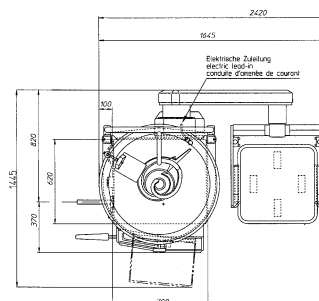
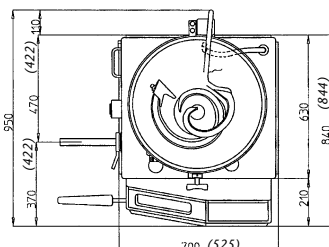


handtmann VF 80

(dimensions of the VF 50 in brackets)



handtmann VF 80/160



handtmann
Ideas for the future.