

Challenges

The software

Benefits

Options

HCU software

The production optimisation tool



handtmann
Ideas for the future.

HCU software

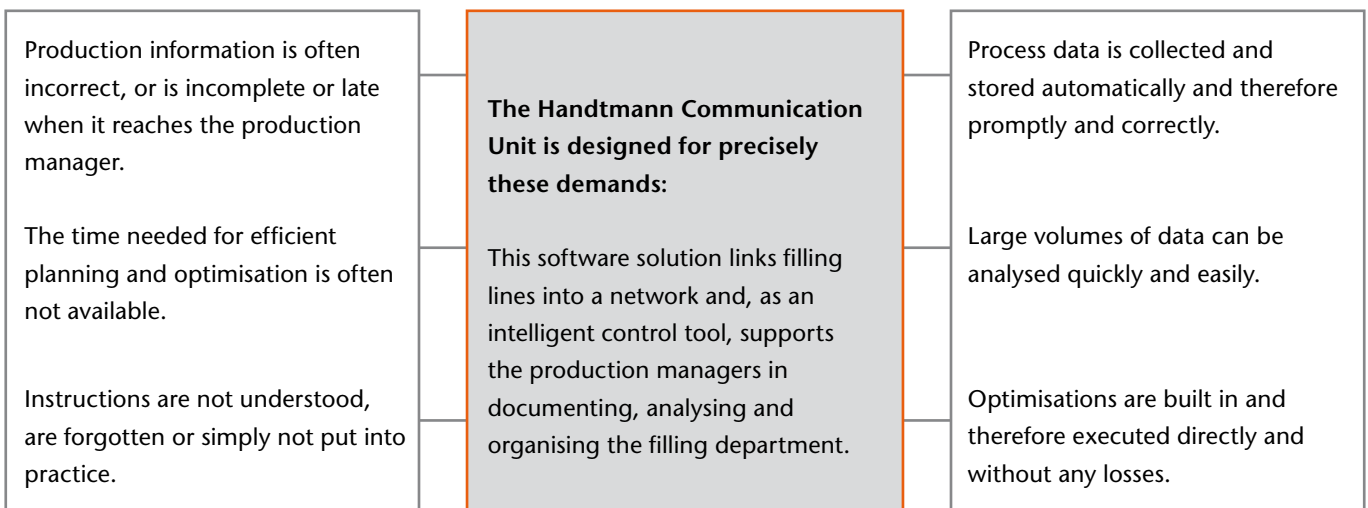
Cost reduction. Consistent quality. Reliability.

The market environment for modern food processing plants is characterised by cost pressure, a highly dynamic approach and complexity. High demands are therefore placed on production managers, in particular by executive managers, the sales department and quality assurance. However, the conditions are not always straightforward – the typical tasks of „analysis, planning, implementation and checking“ are often difficult.

The challenges

HCU

Solutions

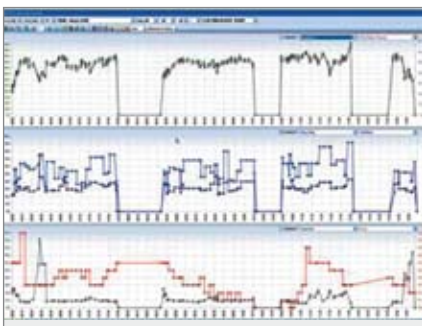


Benefits

Planning, monitoring and controlling the entire filling department: Production data acquisition for perfect process analysis

Batch tracking, accurate documentation of production for each filling line and recording down-times ensure 100% traceability, reveal weak points and thus provide information on the potential for savings. It is possible to improve production capacity utilisation in a targeted way due to the transparency and direct comparability of the filling lines.

- All production data generated is collected, incl. down-times: Data collected on all machine stops, documentation concerning the shift and number of operators, individual classification of down-times (breaks, cleaning, resetting etc.).
- Production data easy to analyse as the process data (line comparisons, daily comparisons, production sequences, production overviews etc.) is displayed in graphs and tables.
- Production control by means of item-specific parameter limitation:
The production parameters can be limited individually for each item. This prevents production faults caused by operating errors.



Simple data transfer

The production data is saved in a database and it can be selected using the HCU viewer and then exported directly to Excel. When data is exported to Excel, individual pivot tables and graphs are automatically created, such as machine operating time per day, quantities per day or month, signals from the metal detector per machine, item or day, as well as hourly output per line, item or day. The database is open and can also be read out directly by higher-level systems (e.g. PPS system, materials management system).

Installation and configuration

The production manager organises the filling lines and scales in tables as well as the programmes on the vacuum fillers directly from the PC. Renaming and standardising, transferring from one line to the other, as well as saving and printing are also carried out on the PC. Simple, central operation.

System requirements

- All vacuum fillers with PCK1, PCK2 or PCK3 control system
- Commercially available PC with Windows XP and Office XP
- Screen resolution at least 1024*786
- Ethernet network (RJ45 cable to each vacuum filler and scales)

Scales suitable for integration

Bizerba

- ST terminal with Ethernet
- BCT software for PC

Mettler-Toledo

- IND690 with Ethernet connection and SysPac software
- MTSscaleConnection software for PC

Toledo do Brasil

HCU software

Online weighing system

Automatic weight control for reduced costs

The integration of a weighing system is another tool aimed at production and cost optimisation with the HCU. Check-weighing scales linked to the network are used for an on-going target/actual value comparison of the set values and the measured weights. A trend calculation tunes the Handtmann filling lines that are also connected to the network. The system then automatically adjusts the portioning weight.

Advantages

- Precise weights due to automatic weight control
- Significantly reduced costs due to less overfilling

Automatic sausage production with an AL system

Smoke stick scales for potential savings and improved performance

With smoke stick scales, the weight is calculated from the average of all the portions on the smoke stick - not, as with other applications, of the individual sausages. Weighing entire smoke sticks produces smaller differences, more accurate averages and a narrower spread.

Advantages

- More reliable weight values for more reliable adjustment
- Higher weighing frequency (with no loss of performance) achieves better weighing results
- Narrower spread due to more reliable adjustment
- Accurate daily averages



Albert Handtmann
Maschinenfabrik GmbH & Co. KG

Hubertus-Liebrecht-Str. 10-12
 D-88400 Biberach/Riss
 Germany
 Tel.: + 49 (0) 73 51 / 45 - 0
 Fax: + 49 (0) 73 51 / 45 - 15 01
 info.machines@handtmann.de
 www.handtmann.de

handtmann
Ideas for the future.